

2025-26 JOINT RESPONSE PLAN

ROHINGYA HUMANITARIAN CRISIS

SNAPSHOT OF THE FIRST YEAR OF THE PLAN

KEY FIGURES: JANUARY-DECEMBER 2025[^]

1.65M PEOPLE IN NEED

50.7% Women & Girls  49.3% Men & Boys

Host communities
568k



Rohingya refugees/FDMNs
1.09M

1.48M PEOPLE TARGETED

50.8% Women & Girls  49.2% Men & Boys

Host communities
392k



Rohingya refugees/FDMNs*
1.09M

*Forcibly Displaced Myanmar Nationals

USD 934.5M TOTAL REQUIRED for 2025⁺

USD 840.2M

Rohingya Refugees/
FDMN

USD 85.1M

Bangladeshi Host
Community

156
PROJECTS

11
UN agencies

56
Bangladeshi NGOs

113
UNIQUE
PARTNERS*

33
International NGOs

13
Other national
and international
organizations

*This includes 57 appealing partners and 84 implementing partners (of the appealing partners, 28 are implementing activities under other projects).



Strategic Objective 1

Work towards the early, voluntary, and sustainable repatriation of Rohingya refugees/FDMNs to Myanmar.

Provide learning opportunities and enhance skill development and capacities to equip Rohingya with the skills and knowledge needed to rebuild their lives following their eventual return to Rakhine. By supporting the dignity and resilience of Rohingya refugees/FDMNs during their displacement in Bangladesh, including education and livelihood opportunities for youth, the population will be well placed for durable solutions including voluntary, safe, dignified, and sustainable return and reintegration.



Strategic Objective 2

Strengthen the protection and resilience of Rohingya refugee/FDMN women, men, girls, and boys.

Protect individuals and communities, and contribute to an enabling environment respectful of the basic needs, well-being, and resilience of Rohingya refugees/FDMNs in close cooperation with the Government of Bangladesh and affected populations.



Strategic Objective 3

Deliver life-saving assistance to populations in need.

Maintain cost-effective services and assistance to ensure equal access for affected populations in need of humanitarian assistance in Cox's Bazar and Bhasan Char and explore opportunities to introduce more sustainable approaches to reduce the vulnerability of Rohingya refugees/FDMNs. In close cooperation with the Government of Bangladesh and affected populations, enhance preparedness and contingency plans for disaster responses at the Upazila level.



Strategic Objective 4

Foster the well-being of host communities.

In close cooperation with the Government of Bangladesh, international financial institutions and other development partners as well as affected populations, support vulnerable households in Cox's Bazar in the spirit of mitigating the effects of hosting a large number of Rohingyas on the host communities. Complementary development programmes – for example, those funded by the Asian Development Bank, the World Bank and the UN – will help the Government to facilitate equitable access to quality services for communities; strengthen public service infrastructure and delivery through system and capacity strengthening; support sustainable and improved livelihoods for host communities; and rehabilitate the environment and ecosystem.



Strategic Objective 5

Strengthen disaster risk management and combat the effects of climate change.

In coordination with the Government of Bangladesh, mitigate the adverse impacts on the environment resulting from the number and protracted presence of Rohingya refugees/FDMNs in Cox's Bazar. This will include efforts to restore ecosystems, promote reforestation, develop waste management plans, and strengthen disaster coordination mechanisms, promote the use of renewable and cleaner energy sources, discourage the use of plastic materials and packaging, and train Rohingya refugees/FDMNs and host communities to respond to the effects of climate change and disaster risks.

SNAPSHOT OF THE FIRST YEAR OF THE PLAN: JANUARY-DECEMBER 2025

POPULATION TARGETED IN 2025: ROHINGYA REFUGEES/ FDMNs AND HOST COMMUNITY IN COX'S BAZAR



1,045,298

51.2% Women & Girls **48.8%** Men & Boys

542,138 Children (<18 yrs)
264,823 girls
277,315 boys

458,943 Adults (18-59 yrs)
251,516 women
207,427 men

44,217 Elderly (60+ yrs)
19,229 women
24,988 men



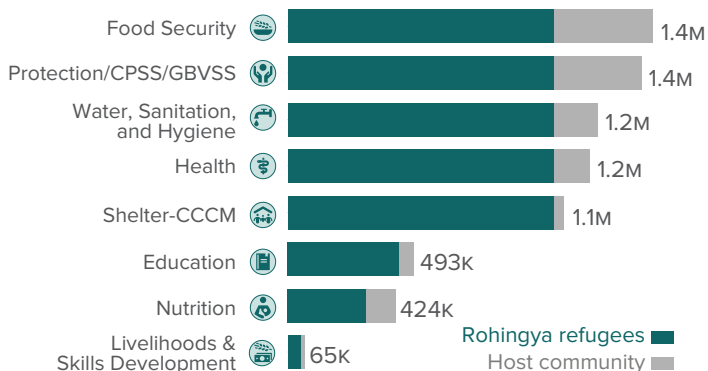
392,126

49.6% Women & Girls **50.4%** Men & Boys

200,066 Children (<18 yrs)
97,638 girls
102,428 boys

174,085 Adults (18-59 yrs)
89,677 women
84,408 men

17,975 Elderly (60+ yrs)
7,328 women
10,647 men



POPULATION TARGETED IN 2025: ROHINGYA REFUGEES/ FDMNs ON BHASAN CHAR*



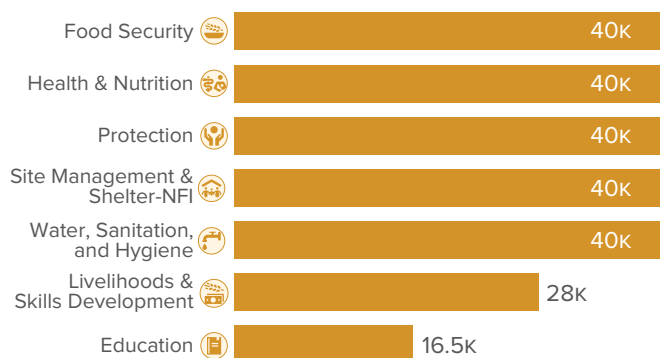
40,000**

51.3% Women & Girls **48.7%** Men & Boys

22,512 Children (<18 yrs)
11,150 girls
11,362 boys

16,612 Adults (18-59 yrs)
9,025 women
7,587 men

877 Elderly (60+ yrs)
351 women
526 men

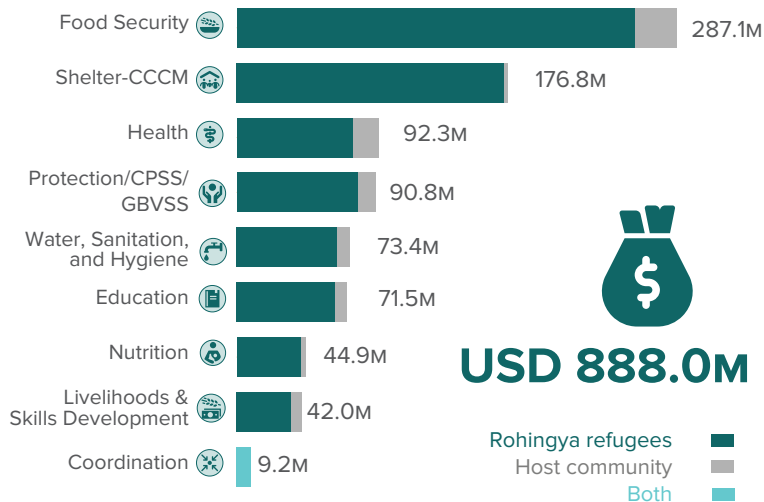


2025 JOINT RESPONSE PLAN APPEALING PARTNERS

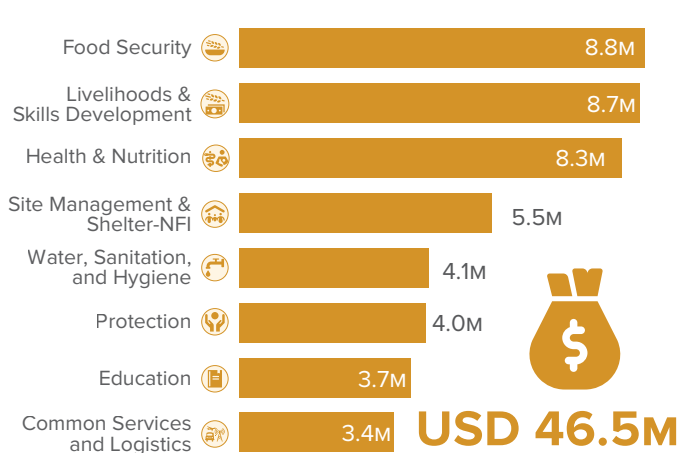
ACF, ACLAB, ACTED, ActionAid, AMAN, BDRCS, BRAC, CA, CARE, Caritas, CBMG, COAST, CWW, DRC, Educo, FAO, FIVDB, Friendship, GK, GUSS, HAEFA, HEKS, HFHI, HI, IMPACT, IOM, IRC, IRW, MedGlobal, Mukti, NRC, OBAT, Oxfam, PARC, PHALS, Plan, PRANTIC, Protyashi, PULSE, QC, RDRS, SAWAB, SCI, Sesame, TdH, UN Women, UNDP, UNESCO, UNFPA, UNHCR, UNICEF, UNOPS, WFP, WHH, WHO, WVI, YPSA

THE JRP 2026 TARGETS AND BUDGET WILL BE PREPARED SEPARATELY

PRIORITIZED NEEDS FOR 2025: COX'S BAZAR



PRIORITIZED NEEDS FOR 2025: BHASAN CHAR



^ JRP 2025 includes 50,000 confirmed new arrivals who fled more recently to Bangladesh and who require protection and assistance in the Rohingya camps. Additionally, an estimated 50,000 new arrivals are believed to be living in the Cox's Bazar camps and are in the process of being biometrically identified. Biometric identification is an exercise in which newly arrived Rohingyas are recorded through biometric identification procedure jointly by GoB and UNHCR. This population, and any further new arrivals who arrive during 2025, will be included in future updates to Sector responses and budgets.

† The total requirement for JRP 2025 includes USD 840.2M for Rohingya refugees/FDMNs, USD 85.1 for the Bangladeshi host community, and USD 9.2M for Coordination.

* The Bhasan Char Response is led by the Government of Bangladesh, with the support of UNHCR on behalf of the broader humanitarian community. It is coordinated separately from the Sectors in Cox's Bazar.

** This JRP is appealing to support 40,000 Rohingya refugees/FDMNs on the island. Adjustments to the appeal will be made, if required, based on the actual number of Rohingya refugees/FDMNs on Bhasan Char.